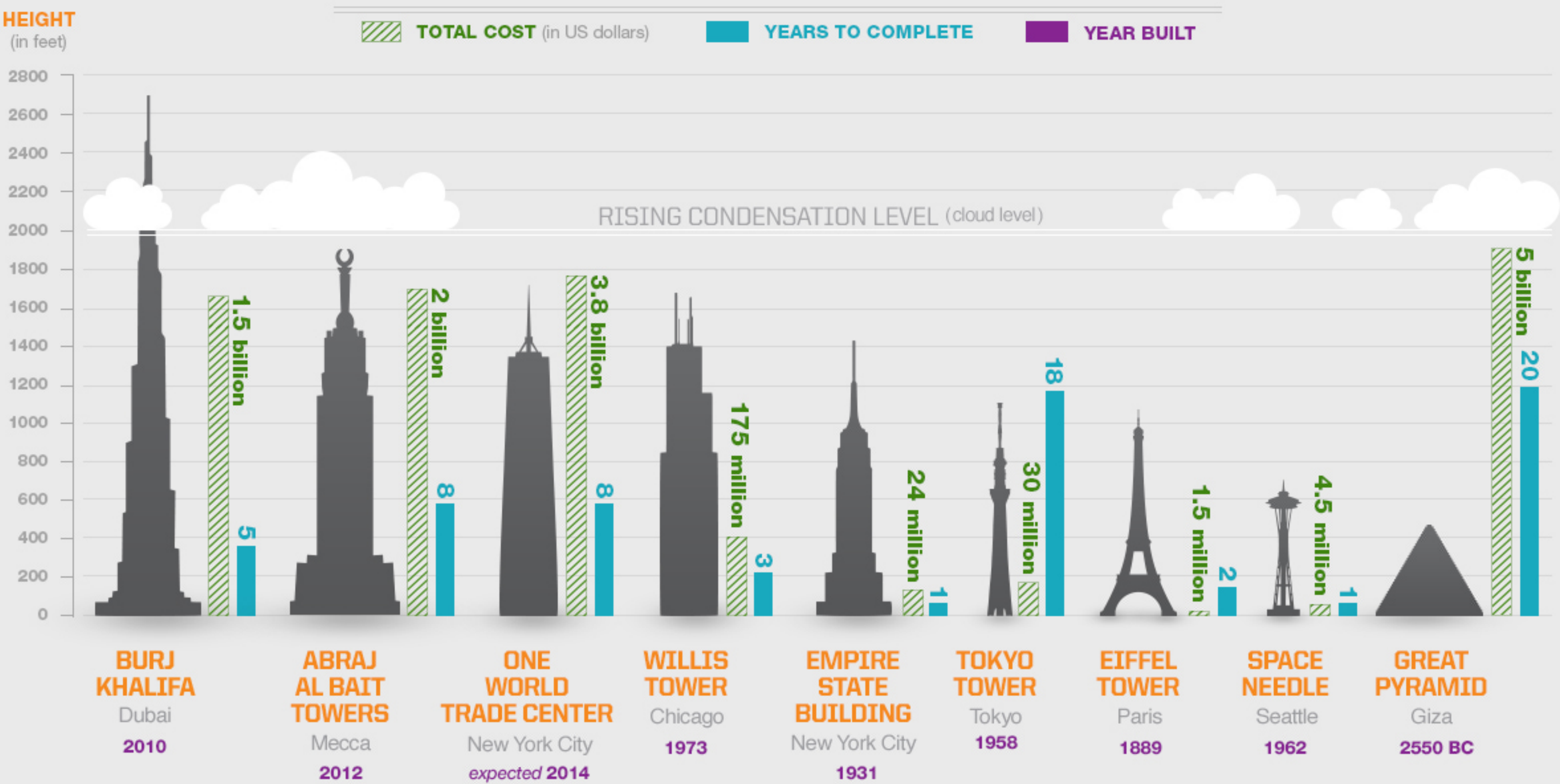


THE WORLD'S TALLEST BUILDINGS

BUILDING TO THE SKY



INTERESTING STATS

- TALLEST BUILDING IN THE WORLD**
- HAS A CLOCK **6.5X** THE SIZE OF **22ft WIDE** BIG BEN'S
- 40** THOUSAND TONS OF STEEL
- 07** MILLION MAN HOURS TO COMPLETE
- 28** THOUSAND Lts OF PAINT
- 05** BILLION TOTAL LIGHTS
- BLOCKS WEIGH **2.5** TONS EACH